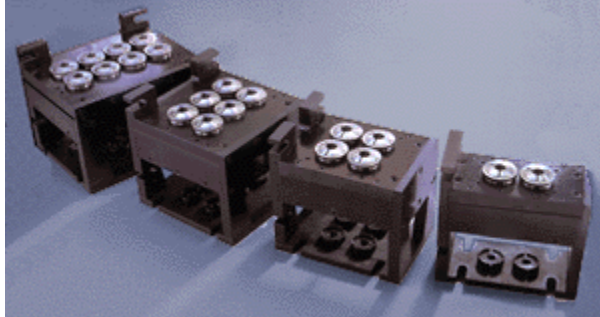


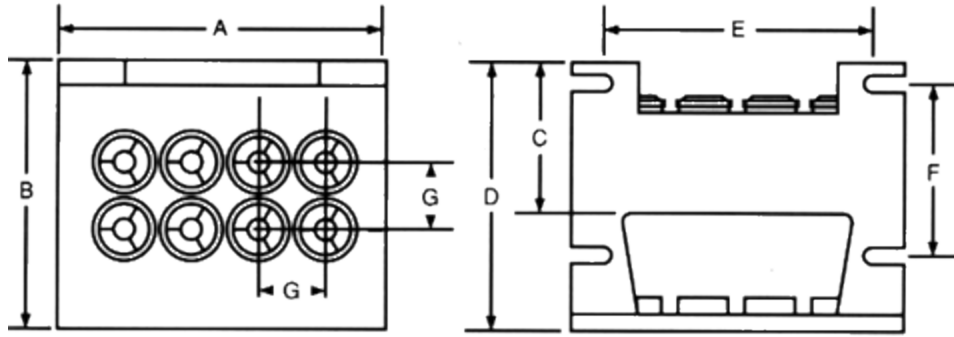
# Uniform



## Multi-Collet Fixtures in the Multiples You Need

**Independent Collet<sup>®</sup> design lets you use only as many collets as the job requires, for even more versatility.** Get higher productivity when you gang-machine small parts. Choose the right size fixture for your optimum needs...then use only a few collets when you have a smaller run. For large jobs, interconnect several fixtures easily to achieve maximum secondary machining production.

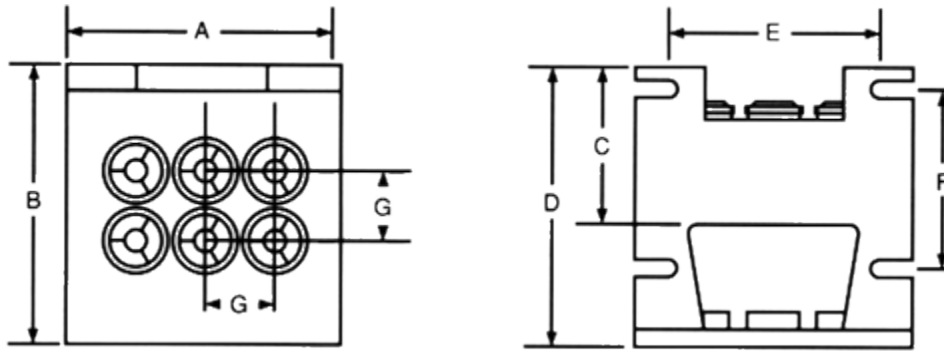
All models feature 5C collet cells on uniform 2" center distances...located within .0005" tolerance. Hydraulic or mechanical locking options give you fast loading and unloading...cut tool changing time by 90%! Patented alignment feature prevents radial collet movement.



**8 Collet Fixture Specifications**

	A	B	C	D	E	F	G
<b>Dimensions</b>	<b>9.750</b>	<b>8.000</b>	<b>4.375</b>	<b>7.875</b>	<b>8.000</b>	<b>5.000</b>	<b>2.000</b>

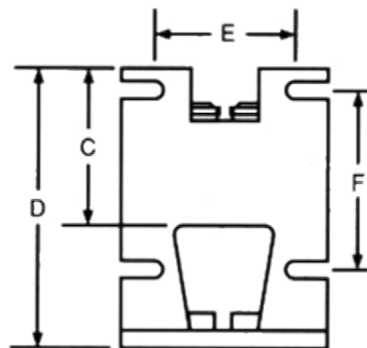
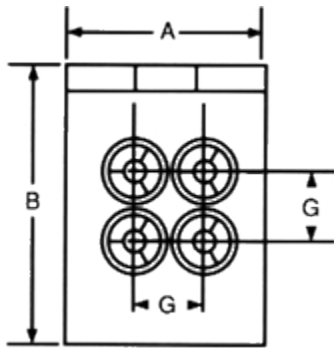
<b>Weight: 68lbs.</b>	<b>Collet Style: 5C</b>	<b>Maximum Gripping Pressure: 2500</b>
-----------------------	-------------------------	--



**6 Collet Fixture Specifications**

	A	B	C	D	E	F	G
<b>Dimensions</b>	<b>7.750</b>	<b>8.000</b>	<b>4.375</b>	<b>7.875</b>	<b>6.000</b>	<b>5.000</b>	<b>2.000</b>

<b>Weight: 56lbs.</b>	<b>Collet Style: 5C</b>	<b>Maximum Gripping Pressure: 2500</b>
-----------------------	-------------------------	--



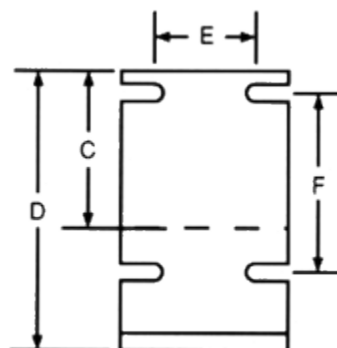
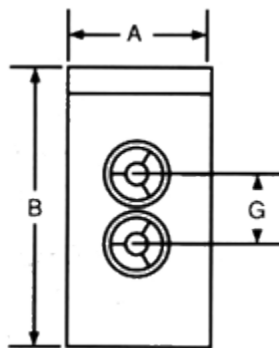
### 4 Collet Fixture Specifications

	A	B	C	D	E	F	G
Dimensions	5.750	8.000	4.375	7.875	4.000	5.000	2.000

Weight: 44lbs.

Collet Style: 5C

Maximum Gripping Pressure: 2500



### 2 Collet Fixture Specifications

	A	B	C	D	E	F	G
Dimensions	3.750	8.000	4.375	7.875	2.000	5.000	2.000

Weight: 31lbs.

Collet Style: 5C

Maximum Gripping Pressure: 2500