

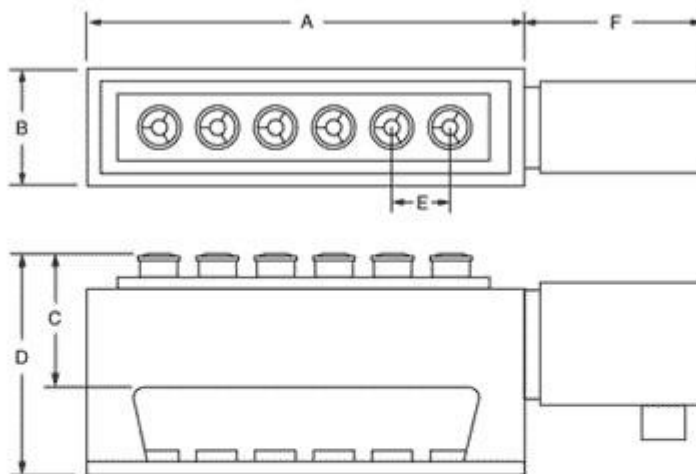


## Rotary Indexer - MultiDex 360



Finally, a multi-station ultra-compact rotary indexer to fill the needs of small drilling and tapping machines. It is specifically designed to allow users to put up to six parts under the spindle that requires indexing. Currently available indexers are too large to allow more than one or possibly two parts on the table. The Beere "MultiDex 360" rotary indexer allows a choice of up to six parts held by 5C collets within a footprint of less than 19" in length.

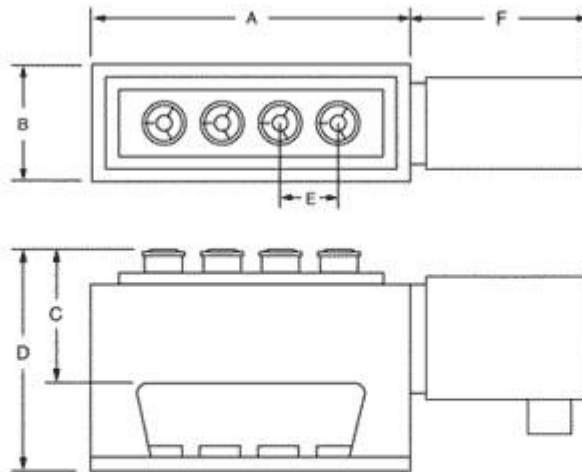
### 6 Cell



In-Line 6 Collet Fixture Specifications

	A	B	C	D	E	F
Dimensions	18.750	6.250	6.300	9.500	2.500	7.625
Weight: 145 lbs. approx.	Collet Style: 5C		Maximum Gripping Pressure: 2500			

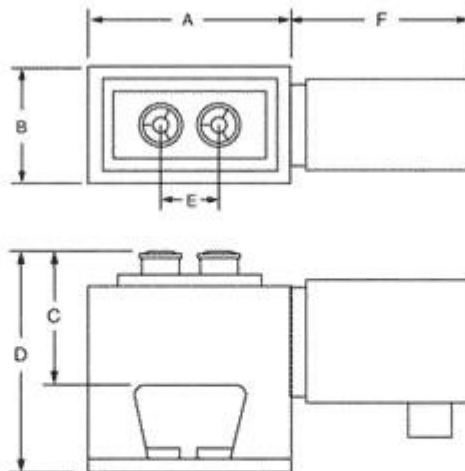
## 4 Cell



**In-Line 6 Collet Fixture Specifications**

	A	B	C	D	E	F
Dimensions	18.750	6.250	6.300	9.500	2.500	7.625
Weight: 145 lbs. approx.	Collet Style: 5C		Maximum Gripping Pressure: 2500			

## 2 Cell



**In-Line 6 Collet Fixture Specifications**

	A	B	C	D	E	F
Dimensions	18.750	6.250	6.300	9.500	2.500	7.625
Weight: 145 lbs. approx.	Collet Style: 5C		Maximum Gripping Pressure: 2500			