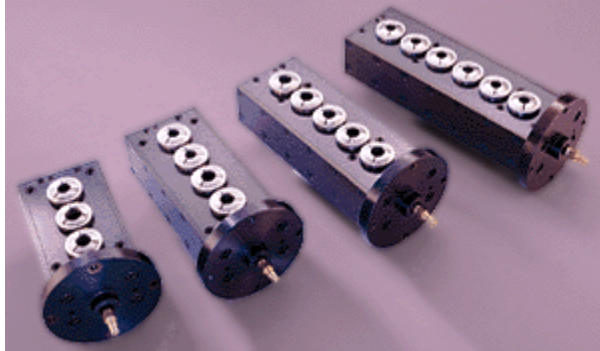


Indexable In-Line

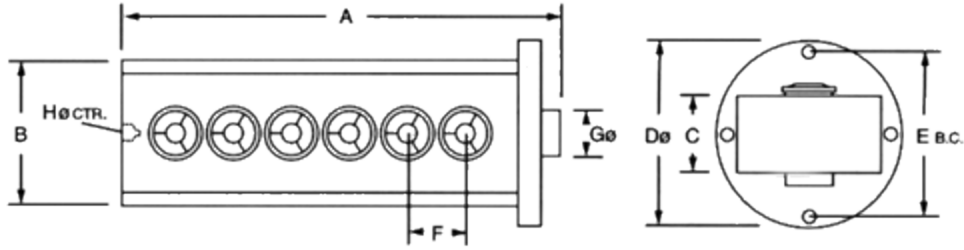


- **Gang-machine parts**
- **Standard 5C collets on uniform 2" center**
- **Works with rotary or 5C indexers**
- **2J and 3J models are available for increased capacity**
- **Fast loading and unloading**
- **Load from front or rear**
- **Air over hydraulic clamping**
- **Female center included for tailstock support**
- **No radial movement**
- **Ideal for pallet systems**
- **Positive top and bottom stops**

Work at any angle without losing your Work Piece Coordinate with the Indexable In-line Multi-Collet Fixtures.

The Independent Collet[®] design lets you use only as many collets as the job requires. Achieve higher productivity when you gang-machine small parts. Choose the right size fixture for your optimum needs...then use only a few collets when you have a smaller run. For large jobs, interconnect several fixtures easily to achieve maximum secondary machining production.

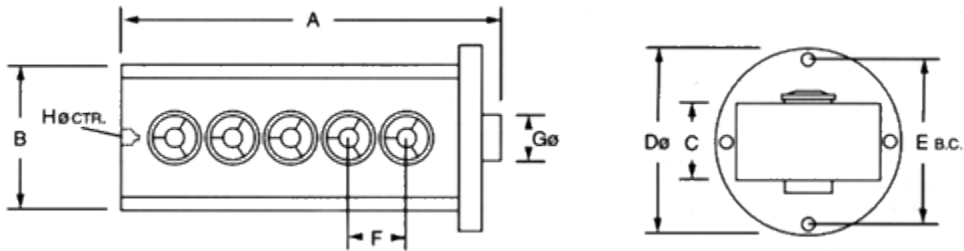
Simplify machine programming and set-up by utilizing the combination of standard 5C collets and accurate 2" center distances located within .0005" tolerance. Air over hydraulic locking gives you fast loading and unloading...cut tool changing time by 90%! The patented alignment feature prevents radial collet movement.



Indexable 6 Collet Fixture Specifications

	A	B	C	D ø	E B,C	F	G ø	H ø CTR
Dimensions	15.000	4.500	2.875	6.000	5.250	2.000	1.000	#16

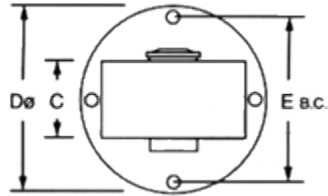
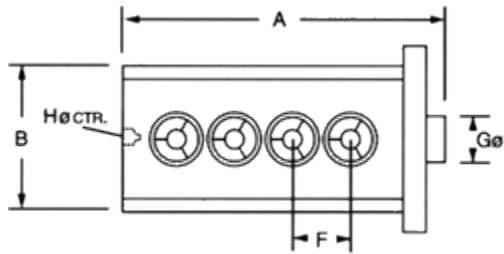
Weight: 48lbs.	Collet Style: 5C	Maximum Gripping Pressure: 2500
-----------------------	-------------------------	--



Indexable 5 Collet Fixture Specifications

	A	B	C	D ø	E B,C	F	G ø	H ø CTR
Dimensions	13.000	4.500	2.875	6.000	5.250	2.000	1.000	#16

Weight: 42lbs.	Collet Style: 5C	Maximum Gripping Pressure: 2500
-----------------------	-------------------------	--



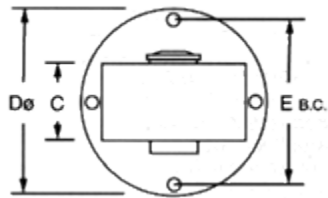
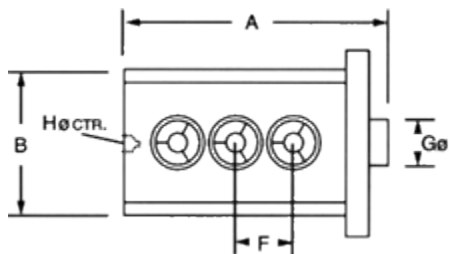
Indexable 4 Collet Fixture Specifications

	A	B	C	D \emptyset	E B,C	F	G \emptyset	H \emptyset CTR
Dimensions	11.000	4.500	2.875	6.000	5.250	2.000	1.000	#16

Weight: 36lbs.

Collet Style: 5C

Maximum Gripping Pressure: 2500



Indexable 3 Collet Fixture Specifications

	A	B	C	D \emptyset	E B,C	F	G \emptyset	H \emptyset CTR
Dimensions	9.000	4.500	2.875	6.000	5.250	2.000	1.000	#16

Weight: 30lbs.

Collet Style: 5C

Maximum Gripping Pressure: 2500